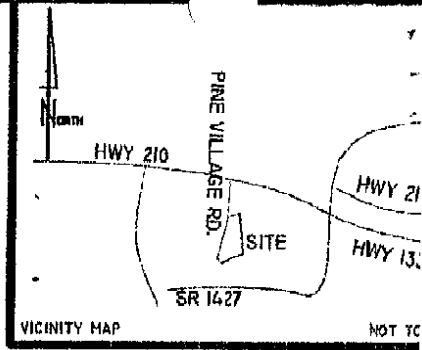
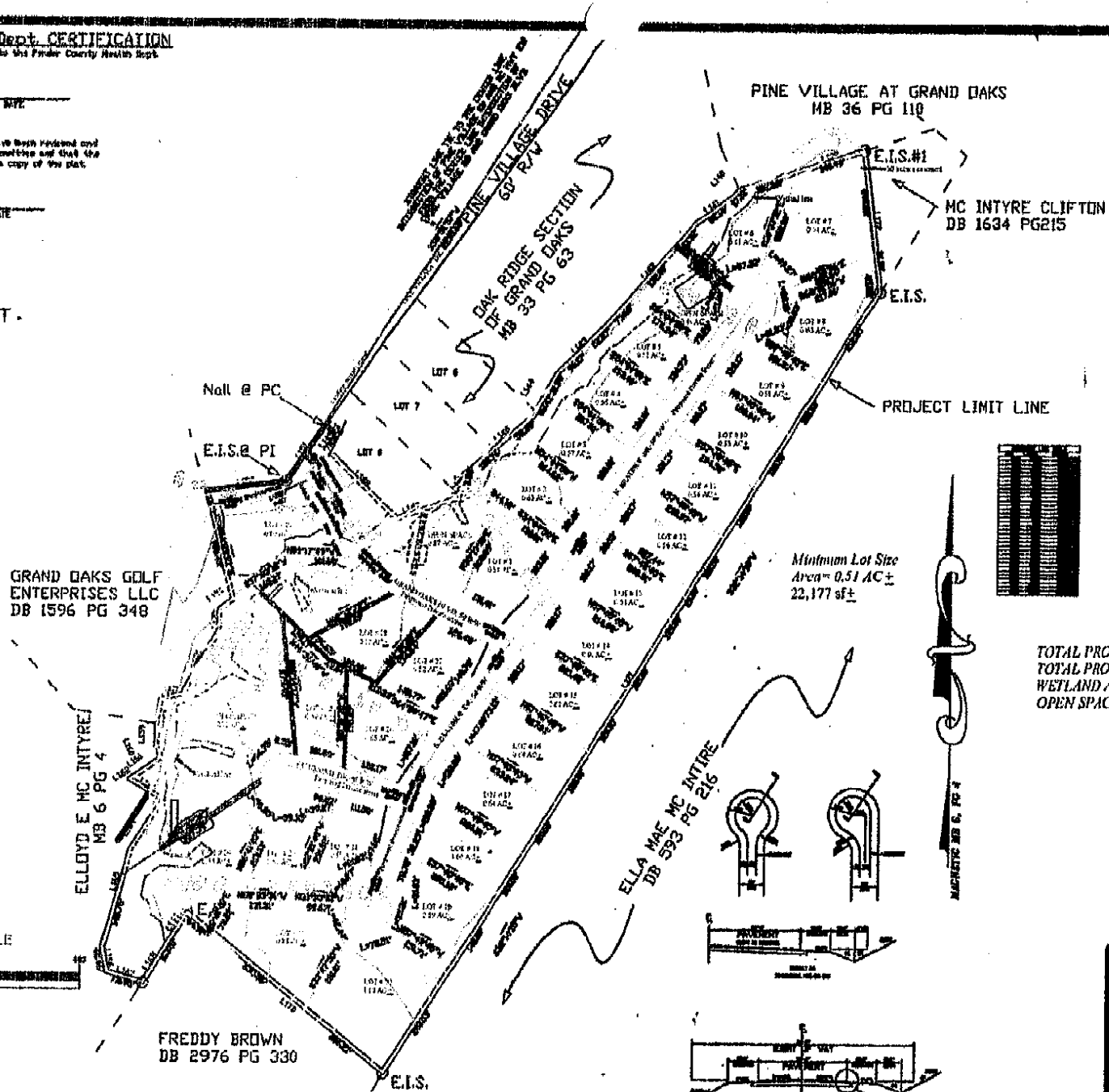


Pender County Health Dept. CERTIFICATION
 certify that this plat has been provided to the Pender County Health Dept.

MC CERTIFICATION
 certify that the road lines on this plat have been reviewed and approved by the Pender County Board of Health and that the information provided has been provided a copy of this plat.

PRELIMINARY PLAT



SURVEYOR'S CERTIFICATION
 I, Mark F. Johnson, certify that this plat was prepared under my supervision from an actual survey I conducted in accordance with the laws of North Carolina. I am a duly licensed Professional Engineer in the State of North Carolina. The information contained herein is true and correct to the best of my knowledge and belief. I am not responsible for any errors or omissions in this plat.

Mark F. Johnson, P.E., PLS
 L-1277

TOTAL PROJECT AREA= 26.32 AC ±
 TOTAL PROJECT WETLAND AREA= 3.52 AC ±
 OPEN SPACE= 4.08 AC ±

ENGINEER'S CERTIFICATION
 I certify that the engineer and creator certifies that the plans were designed by a Professional Engineer in the State of North Carolina.

Engineer

PRELIMINARY PLAT

TITLE
Oak Ridge Section at Grand Oaks
 LONG CREEK TOWNSHIP PENDER COUNTY
 OWNER/DEVELOPER
ELLOYD E. MCINTIRE
 309 PINE VILLAGE RD.
 ROCKY POINT, NC 28457

Johnson Surveying
 201A Wright St.
 BURGAW, NC
 910-259-2005

p.1

9106759337

Elloyd E. McIntire